

# 60x60 cm

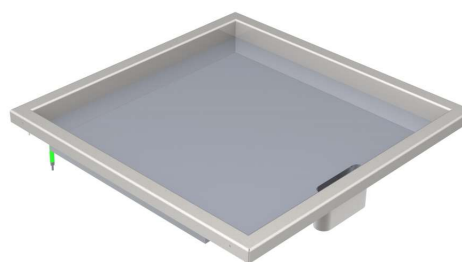
## hard chrome griddle plate

Strong and traditional

Flexible powerful griddle for intensive everyday use. Square and very practical griddle area. Features two heating zones positioned one next to the other which can be controlled independently.

### Technical data:

|                 |   |
|-----------------|---|
| Dimensions:     | 600 x 600 mm  |
| Output:         | 6.0 kW  |
| Connector:      | 3x400 VAC   |
| Heating zone:   | 1, optionally 2 at a surcharge                                    |
| Control:        | Electronic, responsive and precise temperature control            |
| Monitoring:     | Full-coverage temperature monitoring                              |
| Anschluß:       | 3x400 VAC   |
| Frying Surface: | 540 x 540 mm  |
| Adjustment:     | Freely adjustable temperature control                             |
| Accessories:    | Removable splash guard<br>Angle spatula<br>Stainless steel sponge |
| Options:        | 1/1 or 1/2 grooved on right                                       |



[Product weblink](#)

MENU SYSTEM AG  
Oberstrasse 222  
CH-9014 St. Gallen  
Switzerland

T: +41 71 272 51 00  
info@menusystem.ch  
www.menusystem.ch

MENU SYSTEM Germany GmbH  
Turmstrasse 4  
D-78467 Konstanz  
Germany

T: +49 1805 880558-10  
info@menusystem.de  
www.menusystem.de

MENU SYSTEM Austria GmbH  
Steinebach 18  
AT-6850 Dornbirn  
Austria

T: +43 55 72 39 48 00  
info@menusystem.at  
www.menusystem.at