

# 90x40 cm

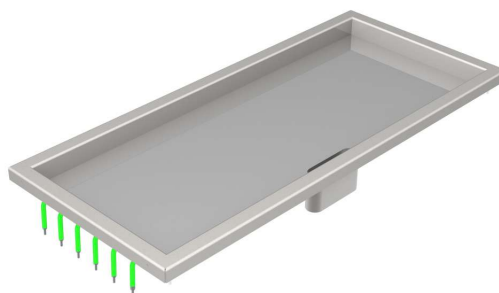
## hard chrome griddle plate

Wide and powerful

Wide griddle for maximum productivity and managing large volumes. Ideal for steakhouses, barbecue restaurants and large-scale catering stands. Features two heating zones positioned one next to the other which can be controlled independently.

### Technical data:

Dimensions:	900 x 400 mm
Output:	6.0 kW
Connector:	3x400 VAC
Heating zone:	1, optionally 2 at a surcharge
Control:	Electronic, responsive and precise temperature control
Monitoring:	Full-coverage temperature monitoring
Anschluß:	3x400 VAC
Frying Surface:	840 x 340 mm
Adjustment:	Freely adjustable temperature control
Accessories:	Removable splash guard Angle spatula Stainless steel sponge
Options:	1/2 grooved on right



### [Product weblink](#)

MENU SYSTEM AG  
Oberstrasse 222  
CH-9014 St. Gallen  
Switzerland

T: +41 71 272 51 00  
info@menusystem.ch  
www.menusystem.ch

MENU SYSTEM Germany GmbH  
Turmstrasse 4  
D-78467 Konstanz  
Germany

T: +49 1805 880558-10  
info@menusystem.de  
www.menusystem.de

MENU SYSTEM Austria GmbH  
Steinebach 18  
AT-6850 Dornbirn  
Austria

T: +43 55 72 39 48 00  
info@menusystem.at  
www.menusystem.at