

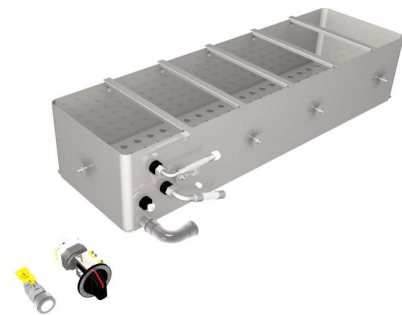
# Bain-marie

## MS-BM-GN 6x1/3 E

Fully automatic bain-marie for carefree work, for hanging 200 mm deep GN trays

### Technical data:

Dimensions: 1040 x 305 x 210mm (LxWxD)  
Output: 4.8 kW  
Connector: 3x400 VAC  
Heating zone: 1 heating zone  
30° - 100°C  
Control: 1 control unit  
Anschluß: 3x400 VAC  
Adjustment: Freely adjustable power control



[Product weblink](#)

MENU SYSTEM AG  
Oberstrasse 222  
CH-9014 St. Gallen  
Switzerland

T: +41 71 272 51 00  
info@menusystem.ch  
www.menusystem.ch

MENU SYSTEM Germany GmbH  
Turmstrasse 4  
D-78467 Konstanz  
Germany

T: +49 1805 880558-10  
info@menusystem.de  
www.menusystem.de

MENU SYSTEM Austria GmbH  
Steinebach 18  
AT-6850 Dornbirn  
Austria

T: +43 55 72 39 48 00  
info@menusystem.at  
www.menusystem.at