

# Eco Wok

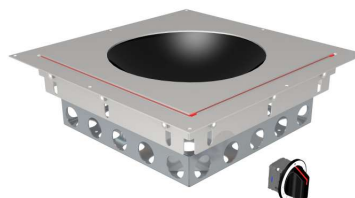
## MS-I-Eco Wok300 E

Versatility from Asia

High-performance wok for fast cooking, versatile uses, precise and responsive control.

### Technical data:

Dimensions:	Recess dimensions:
	CNS: 392 x 392 mm
	Stone: 394 x 394 mm
Output:	3.5 kW
Connector:	1x230 VAC, 50/60 Hz
Control:	1 control unit
Anschluß:	1x230 VAC, 50/60 Hz
Hobs:	1x Eco Wok coil
	Range 300 mm
Capacity:	6 litres
Adjustment:	Freely adjustable power control
Accessories:	Wok pan 300 with handle



[Product weblink](#)

MENU SYSTEM AG  
Oberstrasse 222  
CH-9014 St. Gallen  
Switzerland

T: +41 71 272 51 00  
info@menusystem.ch  
www.menusystem.ch

MENU SYSTEM Germany GmbH  
Turmstrasse 4  
D-78467 Konstanz  
Germany

T: +49 1805 880558-10  
info@menusystem.de  
www.menusystem.de

MENU SYSTEM Austria GmbH  
Steinebach 18  
AT-6850 Dornbirn  
Austria

T: +43 55 72 39 48 00  
info@menusystem.at  
www.menusystem.at