

Full-coverage large hob

MS-I-20EG

Induction appliance with 2 full-coverage large hobs 2 x 9.0 kW

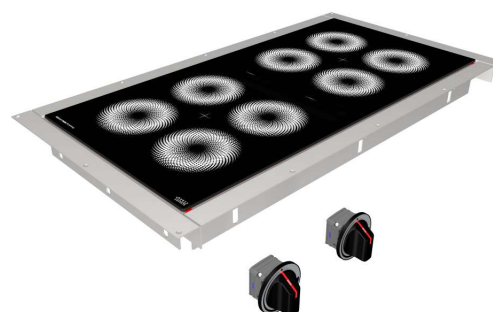
Maximum pan capacity with optimum power distribution

The full-coverage large hob is ideal for cooking with several small pans. It's also the perfect choice wherever even heat distribution in a large pan is required. Highly precise energy metering for perfectly cooked food.

- For use with four 20 cm sauté pans or one saucepan up to 40 cm
- Range 380 x 380 mm
- Full-coverage pot detection and temperature monitoring

Technical data:

Dimensions:	Glass dimensions: 388 x 788 mm Recess dimensions: CNS: 392 x 792 mm Stone: 394 x 794 mm
Output:	2 x 9.0 kW
Connector:	3x400–440 VAC, 50/60 Hz
Control:	2 controls
Monitoring:	Full-coverage temperature monitoring
Anschluß:	3x400–440 VAC, 50/60 Hz
Hobs:	2 x full-coverage large hobs Range 380 x 380 mm each
Adjustment:	Freely adjustable power control



[Product weblink](#)

MENU SYSTEM AG
Oberstrasse 222
CH-9014 St. Gallen
Switzerland

T: +41 71 272 51 00
info@menusystem.ch
www.menusystem.ch

MENU SYSTEM Germany GmbH
Turmstrasse 4
D-78467 Konstanz
Germany

T: +49 1805 880558-10
info@menusystem.de
www.menusystem.de

MENU SYSTEM Austria GmbH
Steinebach 18
AT-6850 Dornbirn
Austria

T: +43 55 72 39 48 00
info@menusystem.at
www.menusystem.at