

# Griddle plate

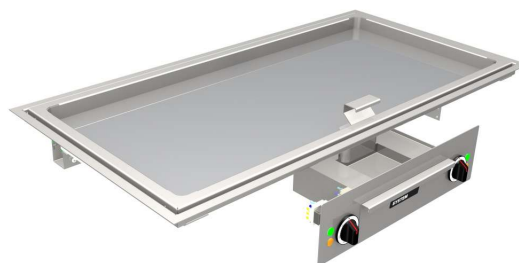
## MS-G-120E

The XXL griddle

Super-size griddle – unique in terms of size and performance. Ideal for busy steakhouses and barbecue restaurants. Features two heating zones positioned one next to the other which can be controlled independently. Room for two chefs to work.

### Technical data:

Dimensions:	Plate dimensions: 1200 × 600 mm Recess dimensions: 1208 x 608 mm
Output:	12.0 kW
Connector:	3×400 VAC, 50/60 Hz
Heating zone:	120 × 60 cm with 2 heating zones 50 to 250 °C
Control:	2 controls
Monitoring:	Full-coverage temperature monitoring
Anschluß:	3×400 VAC, 50/60 Hz
Hobs:	2 heating zones
Frying Surface:	1140 × 540 mm
Adjustment:	Freely adjustable temperature control
Accessories:	Removable splash guard Angle spatula Stainless steel sponge



[Product weblink](#)

MENU SYSTEM AG  
Oberstrasse 222  
CH-9014 St. Gallen  
Switzerland

T: +41 71 272 51 00  
info@menusystem.ch  
www.menusystem.ch

MENU SYSTEM Germany GmbH  
Turmstrasse 4  
D-78467 Konstanz  
Germany

T: +49 1805 880558-10  
info@menusystem.de  
www.menusystem.de

MENU SYSTEM Austria GmbH  
Steinebach 18  
AT-6850 Dornbirn  
Austria

T: +43 55 72 39 48 00  
info@menusystem.at  
www.menusystem.at