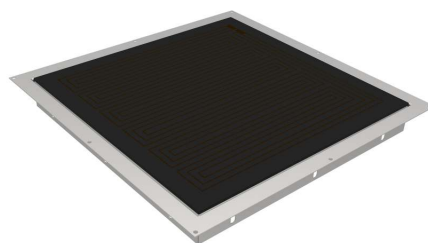


Hot plate MS-WP E

Hot plate, floating glass, can be heated up to 80 degrees.

Technical data:

Dimensions:	Glass dimensions: 600 x 600 mm Recess dimensions: CNS: 604 x 604 mm Stone: 608 x 608 mm
Output:	450 watts
Connector:	1x230 VAC, 50/60 Hz
Control:	1 control unit
Monitoring:	Central temperature monitoring
Anschluß:	1x230 VAC, 50/60 Hz
Adjustment:	Freely adjustable power control



[Product weblink](#)

MENU SYSTEM AG
Oberstrasse 222
CH-9014 St. Gallen
Switzerland

T: +41 71 272 51 00
info@menusystem.ch
www.menusystem.ch

MENU SYSTEM Germany GmbH
Turmstrasse 4
D-78467 Konstanz
Germany

T: +49 1805 880558-10
info@menusystem.de
www.menusystem.de

MENU SYSTEM Austria GmbH
Steinebach 18
AT-6850 Dornbirn
Austria

T: +43 55 72 39 48 00
info@menusystem.at
www.menusystem.at