

Power Wok

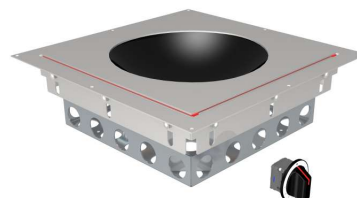
MS-I-Power Wok300 E

Versatility from Asia

High-performance wok for fast cooking, versatile uses, precise and responsive control.

Technical data:

Dimensions:	Recess dimensions: CNS: 392 x 392 mm Stone: 394 x 394 mm
Output:	5.0 kW
Connector:	3x400-440 VAC, 50/60 Hz
Control:	1 control unit
Anschluß:	3x400-440 VAC, 50/60 Hz
Hobs:	1x Eco Wok coil Range 300 mm
Capacity:	6 litres
Adjustment:	Freely adjustable power control
Accessories:	Wok pan 300 with handle



[Product weblink](#)

MENU SYSTEM AG
Oberstrasse 222
CH-9014 St. Gallen
Switzerland

T: +41 71 272 51 00
info@menusystem.ch
www.menusystem.ch

MENU SYSTEM Germany GmbH
Turmstrasse 4
D-78467 Konstanz
Germany

T: +49 1805 880558-10
info@menusystem.de
www.menusystem.de

MENU SYSTEM Austria GmbH
Steinebach 18
AT-6850 Dornbirn
Austria

T: +43 55 72 39 48 00
info@menusystem.at
www.menusystem.at